

ACCURATE WEIGHING NEWS

→ Every Week for Every Body

"CONTINUOUS WEIGHING NEWS" TO CREATE AN INTEREST AND AWARENESS AMONG THE PUBLIC

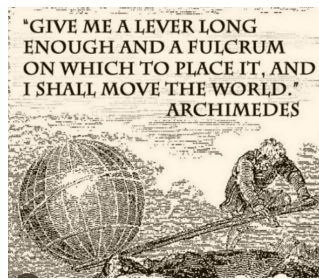
ISSUE NO : JAN / 2023 / 3

NO OF PAGES : 2

DURATION : EVERY WEEK

Hitherto, as we have seen in our last issue, the use of the Beam and counter scale (single lever) all of which incorporate an equal armed lever or beam, yield no mechanical advantage, loads counter balance by weights. Also the Bismar and Roman steelyard can weigh substantial loads by means of relatively small weights (resistant).

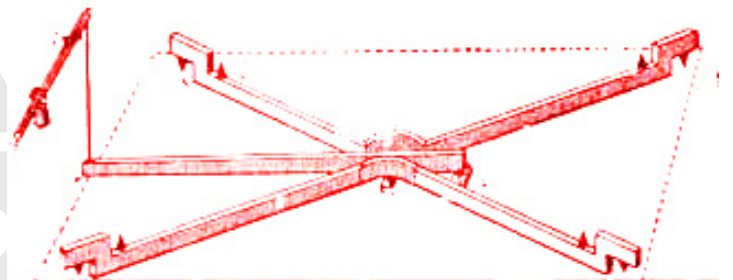
COMPOUND LEVER: A system (as in various weighing scales) of two or more levers arranged to transmit motion or force by linking an arm of each lever to an arm of the next lever in the train.



Although the discovery of the principle of lever as a means of weighing is attributed to Archimedes (287-212 BC), it is a fact that common steelyard was in use throughout the Orient and India many centuries before him which we have seen in detail under the heading Bismar and Roman steelyards. But it is believed only Archimedes defined the principle of lever mathematically.

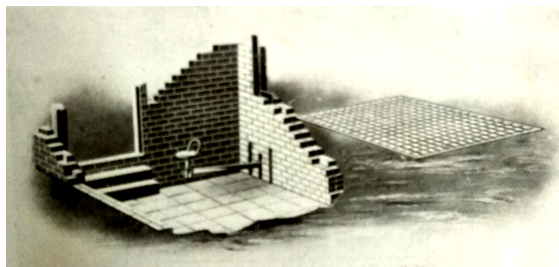
COMPOUND -LEVER SCALES

In compound lever scales (platform scales) more levers are linked, each affording a mechanical advantage providing a more compact assembly by suitable arrangement of the levers. The Roman principle also forms the basis of steelyards fitted to platform scales.



The Turnpike Act of 1741 authorized road trustees to erect at toll gates "any crane, machine or engine, which they shall judge proper for the weighing carts wagons or other carriages" and charged them to levy toll according to weight and to apply revenue to the repair of roads.

Although this Act increased the number of cart steelyards, the inconveniences of weighing by them spurred inventors to devise some less laborious and expeditious manner of weighing.



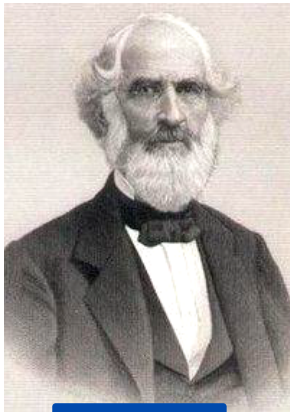
It has been claimed by Eayre and Yeomans that they invented the platform scale, but John Wyatt constructed the first compound lever platform scale around 1741 and his first weigh bridge was erected at the Birmingham Work house. Wyatt's genius and the enormous value of his invention were not recognized in his time.

The only scale in use in the United States at that time were the even balance and the Roman steelyard. Weighing heavy and bulky products on the steelyard was a slow and laborious operation. When an enthusiasm for growing hemp swept over Vermont, the problem became acute.

ACCURATE WEIGHING NEWS

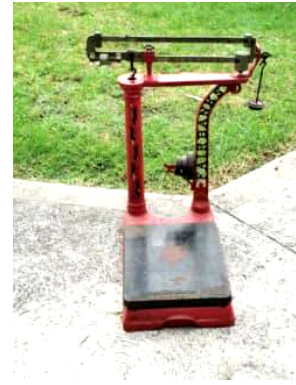
→ Every Week for Every Body

PAGE : 2



THADDEUS

In 1824, Erastus joined Thaddeus' lucrative business. The two brothers formed the E & T Fairbanks Company in St. Johnsbury, Vermont. Once in business together, the two brothers realized that the current weighing system yielded inaccurate results. So, Thaddeus decided to invent a new, more dependable weighing scale. Innovation found in the form of Levers. Now his scale was not only accurate, but very stable. In 1830, Thaddeus built his first real scale and applied for a patent. The new scale was a hit. There after the Fairbanks brothers manufactured many different kinds of scales, including delicate instruments for chemists and jewelers as well as huge platform scales for railroads and canal weigh locks.

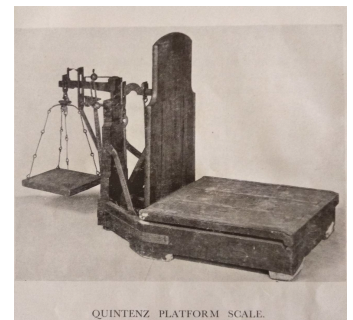


Their agents took out a British patent in 1833. The later, however, was declared invalid when English scale makers proved that the invention had been in use for a number of years.

It is only fair to add that the introduction of Fairbanks' designs led to great improvements in the manufacture of weighbridges and platform scales throughout the world.

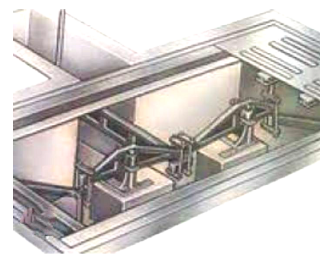


Platform scale may be portable or dormant. Platform scales include those of low capacity, frequently referred to as bench platform scales, which can be carried from one position to another, and those which are moveable.



QUINTEZ PLATFORM SCALE

Dormant platform scales are essentially immobile, as their name implies and, in many features of construction, they resemble weighbridges. The name weighbridges was applied to relatively high capacity dormant platform scales used for weighing wheeled traffic i.e. road vehicles and rail trucks.



Mechanical Weighbridge -

Weighbridges are used all over the world, both small and large companies, as well as transport companies, weigh trucks that transport all types of cargo, from food products to metals, as well as durable consumer goods or sold.

Sharing the weighing news continuously,



ACCURATE ELECTRONICS®

Show Room : Accurate Corner, 511, A-L Raja Street, Coimbatore - 641 001.

Head Office : 13/2, MJ Sargunam Colony, Near SNR College, Nava India, Coimbatore - 641 006.

☎ 0422 - 436 13 96, 453 44 00

☎ 0422 - 450 63 96/97

🌐 www.accurateworld.com

🌐 www.ishtaascales.com

